

**US COAST GUARD AUXILIARY  
D11 SR THREE R REPORT  
BALANCED SCORECARD  
SUMMARY**

Month of : **January 2008**

3R GAR scale: Green= -10% to >+10% Amber= -11% to -20% Red= -21% or >

KEY:

= On : Benchmark, Goal, Last Year    < Behind: Benchmark, Goal, Last Year    ^ Ahead : Benchmark, Goal, Last Year

**MEMBERSHIP DATA (M1)**

	GAR
Total Active Members	G
Min. members transferred out	G
Min. lost Members (total)	R

Benchmark	Goal	Last Year	Note
=			
^			
<			

**TRAINING (M2 [15])**

	GAR
MT SESSIONS	R

Benchmark	Goal	Last Year	Note
<			

**PUBLIC AFFAIRS (C1, C2)**

	GAR
PUBLIC APPEARANCES	A

Benchmark	Goal	Last Year	Note
<			

**VESSEL EXAMINATIONS (VSC) (C1, C2)**

	GAR
VSC GIVEN	R
EXAMINERS	G

Benchmark	Goal	Last Year	Note
<			
=			

**MD VISITS (RBS PV) (C1, C2)**

	GAR
MD VISITS	R
RBS VISITORS	G

Benchmark	Goal	Last Year	Note
<			
=			

**PUBLIC EDUCATION (C1, C2)**

	GAR
PE CLASS SESSIONS	G
INSTRUCTORS	G

Benchmark	Goal	Last Year	Note
=			
=			

**COMMERCIAL FISHING VESSEL EXAMINATIONS (C3)**

	GAR
FISHING VESSEL EXAMS	G
FISHING VESSEL EXAMINERS	R

Benchmark	Goal	Last Year	Note
=			
<			

**CG SUPPORT (C3 [10])**

	GAR
Members	A

Benchmark	Goal	Last Year	Note
	<	=	

**RESOURCES ( OM1 [15], M2 [15] )**

	GAR
CREW	G
PWO	G
COXSWAIN	A
AIR OBSERVERS	R
AIRCREW	R
CO-PILOTS	R
FIRST PILOTS	R
AIRCRAFT CMDR	R
QE	A
RATIO-QE TO CREW (1 to )	

Benchmark	Goal	Last Year	Note
^			
^			
<			
<			
<			
<			
<			
<			
<			

**US COAST GUARD AUXILIARY  
D11 SR THREE R REPORT  
BALANCED SCORECARD  
SUMMARY**

Month of : January 2008

3R GAR scale:

**Green= -10% to >+10%**

**Amber= -11% to -20%**

**Red= -21% or >**

KEY:

= On to: Benchmark, Goal, Last Year   < Behind: Benchmark, Goal, Last Year   ^ Ahead of :Benchmark, Goal, Last Year

**MISSIONS (OM2 [15])**

	GAR
SAFETY	R
REGATTA	R
CHART	R
MEP	R
MARINE SAFETY	G
CG OPS SUPPORT	R
<b>TOTAL OPS MISSIONS</b>	<b>R</b>

Benchmark	Goal	Last Year	Note
<			
<			
=			
<			
^			
<			
<			

**VESELS, AIRCRAFT, RADIO STATIONS (S1 [10])**

	GAR
SURFACE FACILITIES	R
AIR FACILITIES	R
RADIO FACILITIES	G

Benchmark	Goal	Last Year	Note
<			
<			
^			

**NOTES:**

Since this is the first report of the year, no NOTES will be made. This report is a starting place.

**US COAST GUARD AUXILIARY  
D11 SR THREE R REPORT  
BALANCED SCORECARD**

01 Jan, 2008 to 31 Jan 2008

DISTRICT KEY:

114: D11 SR

081: D8 Coastal

130: D13

013: D 1 N

113: D11 N

3R GAR scale:

**Green= -10% to >+10%**

**Amber= -11% to -20%**

**Red= -21% or >**

PROSPECTIVE: MEMBERS (M1 [15]) - TRAINING (OM1 [15])

**MEMBERSHIP DATA (M1)**

District	114	013	081	113	130	Avg	% 114 to Avg	114 GAR
Total Active Members	1705	2170	1665	1453	1599	1722	-1	<b>G</b>
Jan 1, 07 Active Members	1704	-----	-----	-----	-----	-----	-----	
% change	0.1	-----	-----	-----	-----	-----	-----	
Goal	1800	-----	-----	-----	-----	-----	-----	
% of goal	-5	-----	-----	-----	-----	-----	-----	
Members transferred out	0	8	24	11	7	13	-100	<b>G</b>
Lost Members (total)	22	18	25	11	13	17	31	<b>R</b>

**DASHBOARD INDICATOR**

New member PSI at SECCEN	81
Legacy member PSI at SECCEN	34

**TRAINING (M2 [15])**

District	114	013	081	113	130	Avg	% 114 to Avg	114 GAR
MT SESSIONS	28	42	62	29	38	43	-35	<b>R</b>
2007 SESSIONS	1138							

PROSPECTIVE: CUSTOMERS: RECREATIONAL MARINERS, COAST GUARD (C1 [5], C2 [5])

**RBS**

**PUBLIC AFFAIRS (C1, C2)**

District	114	013	081	113	130	Avg	% 114 to Avg	114 GAR
PUBLIC APPEARANCES	29	27	42	17	55	35	-18	<b>A</b>
2007 APPEARANCES	709							

**VESSEL EXAMINATIONS (VSC) (C1, C2)**

District	114	013	081	113	130	Avg	% 114 to Avg	114 GAR
VSC GIVEN	31	0	79	134	27	60	-48	<b>R</b>
EXAMINERS	315	354	364	303	321	336	-6	<b>G</b>
2007 VSC	6375							

**MD VISITS (RBS PV) (C1, C2)**

District	114	013	081	113	130	Avg	% 114 to Avg	114 GAR
MD VISITS	40	78	126	169	111	121	-67	<b>R</b>
RBS VISITORS	112	66	150	96	116	107	5	<b>G</b>
2007 PV VISITS	4460							

**PUBLIC EDUCATION (C1, C2)**

District	114	013	081	113	130	Avg	% 114 to Avg	114 GAR
PE CLASS SESSIONS	15	27	5	17	7	14	7	<b>G</b>
INSTRUCTORS	336	456	318	294	356	356	-6	<b>G</b>
2007 PE CLAS SESSIONS	914							

**CG**

**COMMERCIAL FISHING VESSEL EXAMINATIONS (C3)**

District	114	013	081	113	130	Avg	% 114 to Avg	114 GAR
FISHING VESSEL EXAMS	0	0	0	0	0	0	0	<b>G</b>
FISHING VESSEL EXAMINERS	9	17	18	17	10	16	-42	<b>R</b>
2007 FISHING VESSEL EXAMS	42							

**US COAST GUARD AUXILIARY  
D11 SR THREE R REPORT  
BALANCED SCORECARD**

01 Jan, 2008 to 31-Jan-08

DISTRICT KEY:

**114: D11 SR**

081: D8 Coastal

130: D13

013: D 1 N

113: D11 N

3R GAR scale:

**Green= -10% to >+10%**

**Amber= -11% to -20%**

**Red= -21% or >**

**CG SUPPORT (C3 [10])**

	GAR		Location	07Members	08 Members
Members	98				
Goal	110		SEC SD	10	10
% of goal	-11	<b>A</b>	SEC LA	45	45
			ISC	6	6
			STA LA	8	8
			STA CI	4	4
			DIRAUX	10	10
			TCT FAC.	7	7
			OTHER	8	8
			<b>Total</b>	<b>98</b>	<b>98</b>

**PROSPECTIVE: MISSIONS (OM2 [15])**

**OPERATIONS**

**RESOURCES ( OM1 [15], M2 [15] )**

District	114	013	081	113	130	Avg	% 114 to Avg	114 GAR
CREW	382	409	283	233	304	307	24	<b>G</b>
PWO	25	0	26	8	16	13	100	<b>G</b>
COXSWAIN	194	184	297	161	265	227	-14	<b>A</b>
AIR OBSERVERS	5	9	27	18	7	15	-67	<b>R</b>
AIRCREW	2	7	8	4	6	6	-68	<b>R</b>
CO-PILOTS	1	1	2	1	3	2	-50	<b>R</b>
FIRST PILOTS	1	5	13	9	3	8	-87	<b>R</b>
AIRCRAFT CMDR	4	4	5	6	11	7	-38	<b>R</b>
QE	30	30	54	14	38	34	-12	<b>A</b>
RATIO-QE TO CREW (1 to )	20	20	11	29	15	19		

**MISSIONS (OM2 [15])**

District	114	013	081	113	130	Avg	% 114 to Avg	114 GAR
SAFETY	9	6	14	11	41	18	-50	<b>R</b>
REGATTA	0	0	2	0	0	1	-100	<b>R</b>
CHART	0	0	1	0	1	1	-100	<b>R</b>
MEP	0	0	9	0	7	4	-100	<b>R</b>
MARINE SAFETY	48	46	22	16	40	31	55	<b>G</b>
CG OPS SUPPORT	18	88	43	24	22	44	-59	<b>R</b>
<b>TOTAL OPS MISSIONS</b>	<b>75</b>	<b>140</b>	<b>91</b>	<b>51</b>	<b>111</b>	<b>98</b>	<b>-24</b>	<b>R</b>

**PROSPECTIVE: SYSTEMS-VESSELS, AIRCRAFT, RADIO STATIONS (S1 [10])**

District	114	013	081	113	130	Avg	% 114 to Avg	114 GAR
SURFACE FACILITIES	178	207	311	172	271	240	-26	<b>R</b>
AIR FACILITIES	6	9	17	14	13	13	-55	<b>R</b>
RADIO FACILITIES	167	86	175	196	136	148	13	<b>G</b>
RATIO-Facility TO Member (1 to )	5	7	3	4	4	5		

**"99" MISSIONS**

District	114	013	081	113	130	Avg	% 114 to Avg	114 GAR
Hours	2580	1398	3064	1700	2804	2242	15	<b>G</b>

**NOTES:**

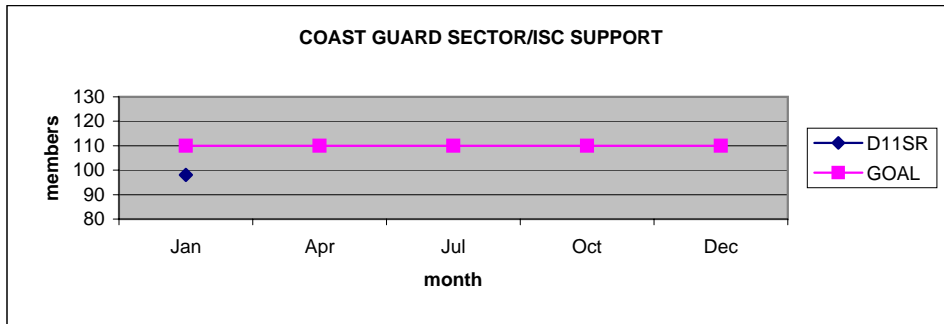
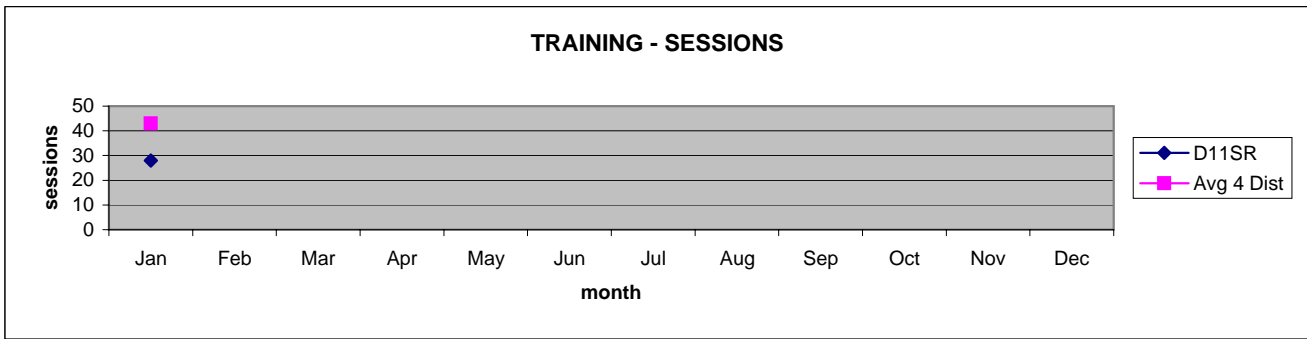
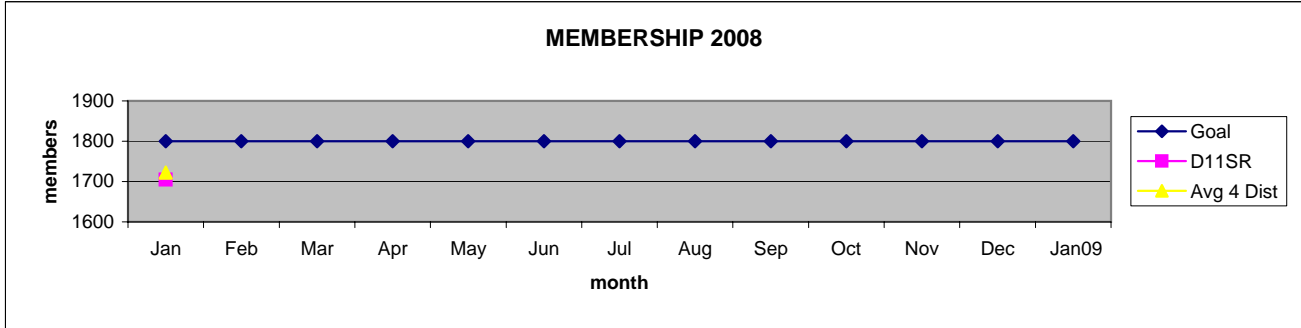
- Districts chosen for comparison have like membership totals in the range of 1453 to 2170 in Jan 08.
- Districts 013 and 081 are on the Atlantic Coast.
- Districts 113 and 130 are on the Pacific Coast.
- There is little patrol mission or VSC activity in the winter on the Atlantic Coast.
- AVG is the average of the other 4 benchmark districts.

**US COAST GUARD AUXILIARY  
D11 SR THREE R REPORT  
BALANCED SCORECARD**

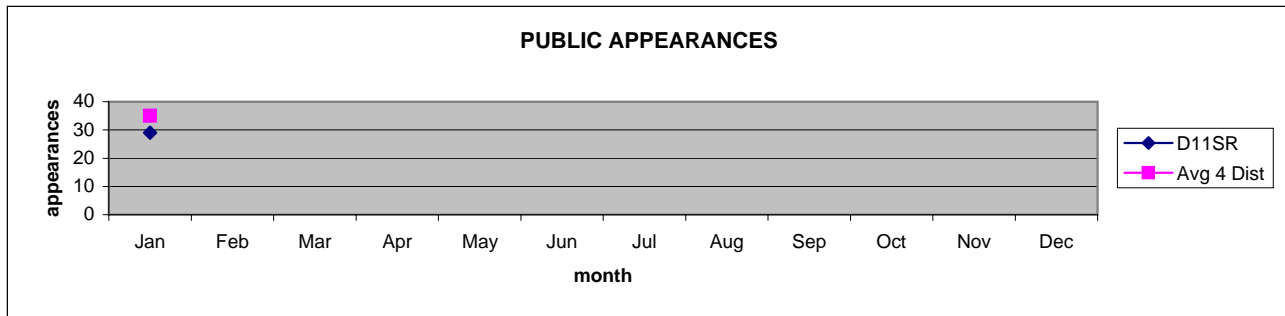
01 Jan, 2008 to

31 Jan, 2008

PROSPECTIVE: MEMBERS - TRAINING



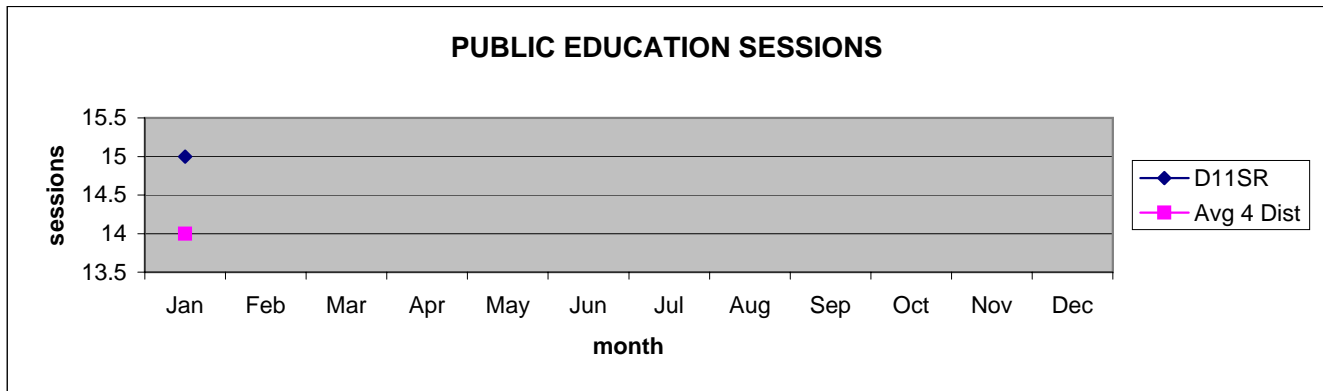
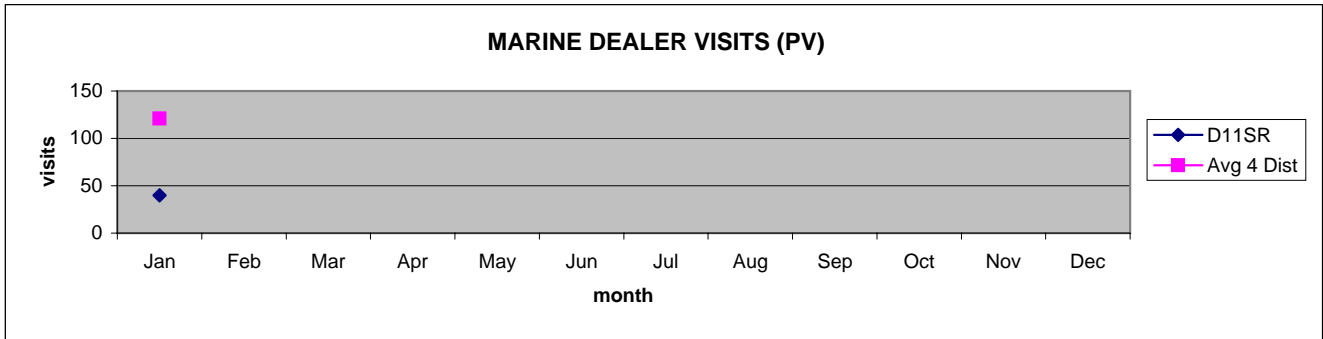
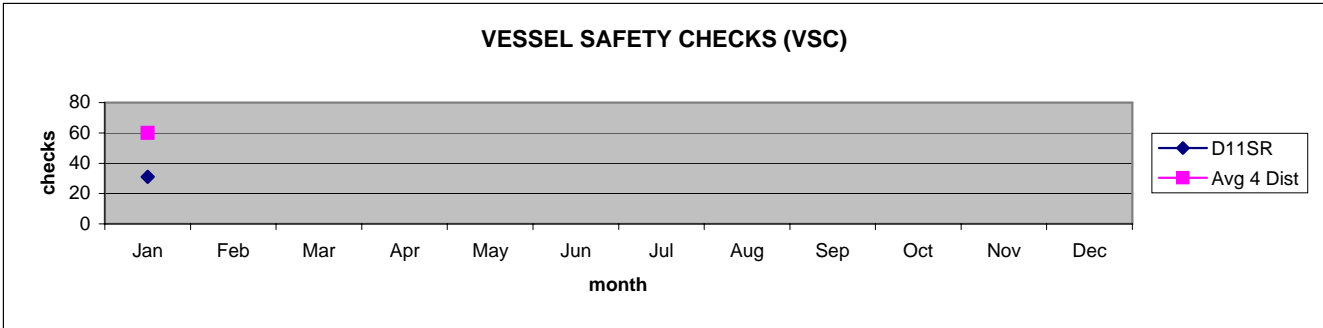
PROSPECTIVE: CUSTOMERS: RECREATIONAL MARINERS, CG SECTORS



US COAST GUARD AUXILIARY  
D11 SR THREE R REPORT  
BALANCED SCORECARD

01 Jan, 2008 to 31 Jan, 2008

PROSPECTIVE: CUSTOMERS: RECREATIONAL MARINERS, CG SECTORS



US COAST GUARD AUXILIARY  
D11 SR THREE R REPORT  
BALANCED SCORECARD

01 Jan, 2008 to 31 Jan, 2008

PROSPECTIVE: MISSIONS

